



VISUAL LANGUAGE & VISUAL LEARNING



In weekly virtual meetings, VL2 students and researchers from around the world meet to discuss studies in progress and issues related to professional development in the sciences.

Integration of Research and Education: "THE VL2 Meeting"

Every Friday afternoon, VL2 students and researchers from around the world huddle around their desktop computers and large-screen monitors. Serious and engaged, these scholars in training share information about studies in progress, statistics training, VL2's strategic focus areas, and issues in professional development relevant to research in visual language and for Deaf and hard of hearing researchers.

Run by **Peter Hauser**, VL2's strategic focus area leader in the integration of research and education, with the support of VL2's Student Leadership Team and **Erica Israel**, VL2's student representative in mentoring in the sciences, the weekly meetings are intended to increase professional development opportunities for VL2 students and to increase communication between students and researchers. Indeed, due to an impressive array of topics and presenters, this is THE meeting for VL2 students and researchers.

With input from VL2's Student Leadership Team, Hauser and Israel

chose topics of importance and interest for students: statistics training, advice on writing in the sciences, getting tenure, preliminary findings from ongoing studies, and finally, the opportunity to practice presentations for conferences.

To date, most of "THE VL2 Meeting" participants are VL2 students, but the

In this issue:

- Co-PI notes: Allen & Petitto
- Spotlight on VL2 in Europe
- Lab Report: BL2 Interns & HDLS Conference

VL2 OFFICIAL
NEWSLETTER
2012

Visual Language and Visual Learning (VL2) is a Science of Learning Center, funded by National Science Foundation Grant # SBE-1041725. Any opinions, findings, and conclusions or recommendations expressed are those of the author(s) and do not necessarily reflect the views of the National Science Foundation.

WRITTEN AND MAINTAINED BY KRISTEN HARMON, PhD

CONTACT: Kristen.Harmon@gallaudet.edu



THE VL2

[Continued from Page 1](#)

meetings are open to all affiliated with VL2. Recent meeting topics and presentations included Dr. **Karey Pine** (Rochester Institute of Technology) who discussed deaf faculty experiences with academia and tenure. **Tayna Evans** from **Guinevere Eden's** lab at Georgetown University presented her work on assessing the effects of sensory and signed language experience on the neural basis of visual motion processing system. **Rain Bosworth** (University of California, San Diego) presented on the plasticity of visual function in infants and adults. Bosworth also discussed, as part of this presentation,

the use of Tobii eye tracking in assessing early language bias in infants.

In an effort to provide more hands-on statistical training for VL2 students, **Kaja Jasinska** (U. of Toronto) recently presented the first of two workshops on multi-level linear modeling (MLM) statistics. The second statistics workshop will be held Friday, November 16. This two-part workshop provides an introduction to and practical experience in the application of MLM for VL2 trainees. MLM provides advanced statistical inferencing capabilities, such as

modeling growth curves, and is designed for hierarchically-organized data sets (i.e. data is organized at more than one level). The workshop also addresses the application of MLM to neuroimaging data. Both MLM meetings are formatted as workshops, not presentations, and so these are highly interactive learning sessions.

Future topics include presentations from students from other Science of Learning Centers, consultation on the writing and presenting process, and overviews of each of the five strategic focus areas in VL2, including an in-

The VL2 Meeting Series Schedule 2012-2013 (Tentative)

- 9/28/12 VL2 Student Leadership Team: SWOT Presentation & SLT Retreat Update
- 10/5 VL2 Project Update: ASL-SRT Preliminary Results, **Peter Hauser** (RIT)
- 10/12 VL2 Infrastructure Update: Educational Neuroscience PhD Program Proposal, **Clifton Langdon & Melissa Herzig** (Gallaudet University)
- 10/19 VL2 Project Update: Plasticity of Visual Function in Infants and Adults, **Rain Bosworth** (UCSD)
- 10/26 Invited Speaker: The Experience of Deaf Professors Getting Tenure, **Karey Pine** (RIT)
- 11/2 Dissertation Presentation: **Tanya Evans** (Georgetown)
- 11/9 Multi Level Modeling Statistical I Workshop, **Kaja Jasinska** (U. of Toronto/Gallaudet University)
- 11/16 Multi Level Modeling Statistical II Workshop, **Kaja Jasinska**
- 11/30 Translational Research, **Jenny Singleton** (Georgia Tech)
- 12/7 TBA
- 12/14 VL2 Holiday Party (All VL2 Labs)
- 1/25/13 VL2 Strategic Focus Area 1: Overview, **David Corina** (UC Davis)
- 2/1 Inter Science Learning Center (iSLC) Conference Posters, I, VL2 Students
- 2/8 Inter Science Learning Center (iSLC) Conference Posters II, VL2 Students
- 2/15 VL2 Project Update: International Reading Study, **Diane Clark** (Gallaudet University)
- 3/15 VL2 Alumni Speaker: Mentoring, **Jason Listman** (RIT)
- 3/29 VL2 Strategic Focus Area 2: Overview, **Jill Morford** (UNM)
- 4/5 Invited Speaker: Collaborative Scientific Writing, **Tonya Stremmlau** (Gallaudet University)
- 4/12 VL2 Strategic Focus Area 3: Overview, **Karen Emmorey** (SDSU)
- 4/19 Invited Science of Learning Center Speaker: TBD
- 4/26 VL2 Strategic Focus Area 4: Overview, **Jenny Singleton** (Georgia Tech)
- 5/3 VL2 Student Leadership Team: 2012-2013 AY VL2 Activities Overview

For details, contact [Rupert Dubler](#) at RIT/NTID, with the Hauser Deaf Studies Lab.



Meeting

depth discussion of VL2's translational research agenda (with **Jenny Singleton** of Georgia Tech.)

As the Student Leadership Team representative on science mentorship, Erica Israel works closely with Integration of Research and

Education

strategic focus area leader Peter Hauser. Israel said, "We believe that this 'face-to-face' communication through



fuzemeeting [a software platform for videoconferencing] enables us all to bring together our interdisciplinary knowledge and further develop the transdisciplinary field of Visual Learning and Visual Language research. It helps us strengthen our network of students and scholars with shared interests. We believe that by providing these invaluable experiences, it will generate mentoring relationships between the VL2 labs."

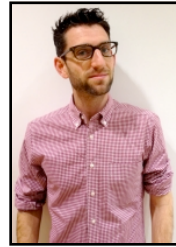
Jessica Contreras (RIT) "The topics offered so far have been extremely diverse and informative benefitting students and

researchers alike. With current research presentations along with a two-part statistics lecture being offered this year I am excited to see what else is in store for us!"



Adam Stone (GU)"I

enjoy the VL2 meetings because it lets me learn about things outside the scope of my current PhD studies. Plus I get to see familiar faces from all over the country. It reminds me of the breadth of VL2's organization and how there's so many people at so many universities, all studying the same themes."



Amy Letteri (GU) "For me, the VL2 meeting represents the essence of VL2. A perfect example of what I mean was Tanya Evans' (Georgetown) presentation on November 2nd. This topic happens to be Tanya's dissertation so presenting



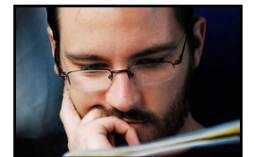
in the meeting gave her valuable experience. Additionally, many attendees had questions regarding her labeling of subjects. These questions gave Tanya the opportunity to gain the perspective of deaf researchers, something that her lab at Georgetown doesn't have. As an attendee, I learned a great deal of information about linguistic neuroimaging, something that my lab at Gallaudet doesn't offer. This year's presentation list promises to cover a

great number of topics about which I am uninformed. I am excited to remedy these gaps in my knowledge. I count myself very lucky to say that every week I meet with my

colleagues and discuss research in way that I've only ever experienced at a professional conference."

Rupert Dubler, Research Program Assistant at The Deaf Studies Lab, RIT "The highly interactive VL2 Fuze Meeting series is a cutting edge videoconferencing solution to enable a geographically dispersed and interdisciplinary Science of Learning Center to communicate with each other through the visual modality in real time. As the SFA5 matures with its heavy reliance on FuzeMeeting, which is itself also rapidly maturing, I have discovered a few critical tips that helps most people improve their Fuze experience. For one, I encourage all participants to use two monitors whenever possible to see the videos and the PowerPoint at the same time. It can also help tremendously to

have a hard line connection to the internet using a cable (not WiFi) to ensure clear video quality. I am now in the process of developing materials in layman language to help all Fuze users leverage this technology more effectively. In the meantime, I want to thank all participants for their pioneering spirit in testing out different aspects of this technology and being patient when the occasional hiccup happens. We are now watching FuzeMeeting evolving to become the gold standard for inter-lab communication within VL2."



Be sure to check in with VL2 students on Fridays about THE VL2 meeting!

research

Co-PI Notes from Laura-Ann Petitto and Tom Allen

As the forces of Mother Nature's super storm ripped through the North Eastern seacoast of the United States, **Tom Allen** and **Laura-Ann Petitto** were riding the many unpredictable waves of life in the high seas of VL2!

Just before the fury of Hurricane

Important Dates to Remember!

- VL2 Executive Team Meetings, Wednesdays, 11:30-12:30
- Strategic Implementation Plan (SIP), Dec 14, 2012
- Strategic Focus Area (SFA) Meetings, Feb 4-8, 2013
- Scientific Advisory Board, Sunday March 3, and Monday March 4, 2013
- School Partnership Meeting, Spring 2013 (TBA)
- Annual Report, April, 2013
- NSF Annual Site Visit, June 2013 (TBA)

Sandy struck, Laura-Ann, Tom, and Dr. **Melissa Herzig** (VL2's new Research to Educational Translation Manager) nearly killed themselves to complete the many documents, reports, as well as the creation of new PhD courses, etc., required to hand in the exciting new Ph.D. Program Proposal in Educational Neuroscience, which, in its entirety, reached over 250 pages.

Only two weeks before, we had completed Stage 1 and Stage 2 documents of the PhD proposal for

one of Gallaudet University's committees (which we explained in our last newsletter entry). This third set of documents, the full proposal, was written and sent in to another separate Gallaudet University committee, with the final "send" key being pushed at 7:58pm on Friday evening October 26! We thought we'd all die from exhaustion. Though Sandy gave the North East two days "off" from being in the office, I think it is safe to say that we all were so shell-shocked from the intensity of the weeks before, and the looming work ahead, that our bodies barely noticed.

To be sure, as Sandy pushed on, so did our next work "emergencies." While Tom turned to throw himself into completing the Gallaudet University Annual Report for VL2 (not to be confused with the NSF VL2 Annual Report), Laura-Ann and team turned to doing the same for the Brain and Language Laboratory (BL2).

Throughout these past few weeks,



we also advanced the many exciting VL2 innovations and priorities for the coming new year

(2012-2013), including advancements to VL2's (i) Risk and Evaluation Procedures for VL2's translational products, (ii) new Data Sharing and Data Pool Web Portals, and the (iii) research action plan for our new NSF Supplemental Grant, "Innovations from Visual Signed Languages in the Advancement of Avatar and Robotics Translation," a project that was written by Laura-Ann Petitto, Thomas Allen, and Melissa Malzkuhn (VL2's Digital Innovation and Media Manager). The NSF funds will permit our team (including Herzig and graduate student **Adam Stone**) to study how children learn, use, and look at, VL2's interactive bilingual ASL-English Apps by examining the children's patterns of eye gaze with our soon to be acquired state-of-the-art Tobii eye-tracking equipment (how cool is this!).

Based on this research, VL2 will then advise designers of avatar and robotic technology in the creation of important research-based translational products that are most highly likely to serve as innovative learning aids in homes and schools for all visual learners, especially the young deaf child.

To add to this swirly brew over the past few weeks, Laura-Ann and Tom were required to spend much time poring over VL2 budgets and subcontract awards with a realistic future-

connections

looking eye, and then writing to all PIs about the path ahead. Reality can, at times, leave one cold, and among the stormy emergencies all around, we were certainly ready for a hot chocolate after this activity!

And even as we write, the work marches on. In between the cracks, both Tom and Laura-Ann have been preparing diligently for their upcoming talks. Tom raced off to Minneapolis, Minnesota, where he gave a poster at the Psychonomic Society Annual Meeting (co-authored with **Diane Clark** and **Donna Morere**). Laura-Ann will be racing off next week after Thanksgiving to present 3 different demanding public lectures and workshops – within one week and a half – in Italy (sigh ... how easy it always is to say “yes” when asked in the sun-filled days of spring well before an event – Smile!)

Somehow writing of Italy makes us think of wonderful food ... and wonderful food ... our own Thanksgiving!

Wishing you all a happy and joyous Thanksgiving!

Safe Travels!

Tom and Laura-Ann

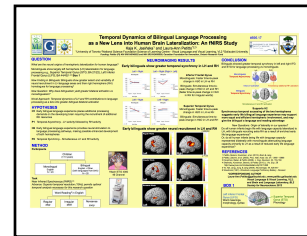


More VL2 News!

The monthly VL2 newsletter is only one of several sources of VL2 news. Be sure to keep up with longer articles on VL2's website at vl2.gallaudet.edu. Recent articles

feature presentations made by key members of VL2's translational research and education team, an

article about a recent fNIRS study (**Jasinska and Petitto**) on the bilingual brain, and VL2 researchers in Europe.



Also keep up with short news items on VL2's Facebook page. Recent items included graduate student involvement with such projects as an iBook lesson blog on including ASL video in iBooks, a plenary session given by our Digital Media Manager at a conference for interpreters, the new **Monday Morning VL2 Coffee Chat**, and resources and news shared by our many partners in Deaf education and research.



VL2 is a National Science Foundation-funded Science of Learning Center on Visual Language and Visual Learning, housed at Gallaudet University in Washington, D.C. Information in this newsletter is based upon work supported by the National Science Foundation under grant number SBE-1041725. For more information about the other Science of Learning Centers in the U.S., see:

The Learning in Informal and Formal Environments (LIFE) Center, University of Washington

Center for Learning in Education, Science, and Technology (CELEST), Boston University

Pittsburgh Science of Learning Center (PSLC), Carnegie-Mellon University

Spatial Intelligence and Learning Center (SILC)

Temporal Dynamics of Learning Center (TDLC), University of California, San Diego.



New Faces: Brain and Language Lab RAs @ GU



This fall, the Brain and Language Lab (BL2) at Gallaudet University brought on five new undergraduate and graduate interns to work on advanced neuroimaging studies of the bilingual brain.

As Science Director **Laura-Ann Petitto** notes, "This is a new era at Gallaudet, and at VL2, with the on-site training of a new cohort of VL2/Gallaudet students on advanced Neuroimaging. Beyond the technical skills of running a modern brain imaging system, they are learning ... everything! About the science, about the questions in the field, about how to run neuroimaging experiments, about how to design their OWN studies, about how to conduct the most advanced, state-of-the-art statistical analyses of collected brain data, and they will be doing all. This opens up more career options, more academic study options, and even more."

Meet this year's cohort of BL2 interns!



Dan Fisher is a fourth-year undergraduate student nearly finished with his bachelor's degree in ASL with a minor in linguistics. After graduation he intends to attend a graduate linguistics program, focusing his research on affixation and compounding in ASL and signed languages.

A hearing child of Deaf parents, Fisher's experience with native bimodal bilingualism fuels his interests in neurological development in bilinguals. His bilingual experience also offers a foundation for his graduate research plans.

By working in the BL2 lab, he hopes to become certified in fNIRS procedures and versed in neurolinguistic foundations in order to later incorporate them into his research.

Krystal Johnson is an undergraduate senior majoring in Psychology with a minor in Communication Studies. As her graduation date nears, Krystal has two internships that will promote her skills and help her gain knowledge in different fields of Psychology. She interns at the Maryland Governor's Office of the Deaf and the Hard of Hearing where she identifies the violations of Federal Laws among Maryland agencies. She also works on a hospital kit promoting awareness of deaf patients for doctors in the state of Maryland.



At her internship at BL2, Krystal will be performing vital functions within the lab, running experiments, and creating computer programs with MATLAB. Krystal, being bilingual, is ecstatic to learn and research on how the brain acquires language. She has yet to determine which profession to pursue because she has many interests and skills.



Geo Kartheiser is a M.A. candidate in linguistics at Gallaudet University. Geo received his B.S. in advertising and public relations from Rochester Institute of Technology in 2009. While a student at Rochester Institute of Technology, he was involved with several studies spearheaded by Dr. **Peter Hauser** of Deaf Studies Laboratory. Prior to his graduate

school studies, he served as the visiting research coordinator for Dr. **Matthew Dye's** Cross-Modal Plasticity Laboratory at University of Illinois at Urbana-Champaign. In his role at Dr. Dye's laboratory, he assisted with a project that utilized a new, non-invasive neuroimaging technique known as Event-Related Optical Signal (EROS) in order to learn more about the effects of deafness on visual functions. EROS is a brain-scanning technique that is comparable to the state-of-the-art neuroimaging equipment that resides in Dr. Laura-Ann Petitto's laboratory, functional Near Infrared Spectroscopy (fNIRS).

Geo aims to draw from his advanced training at the Brain and Language Laboratory and their state-of-the-art resources to further study the impact of visual language as a second language on cognition.

Yashimarae Poindexter, "Yashi," received her Bachelor's degree in Communication Science and Disorders from the University of Pittsburgh. She is presently an undergraduate Deaf Studies major at Gallaudet University. Her research interests are neuro-linguistics studies of early sign language acquisition in children, communication science of bilingualism, and neuro-audiology.



She gained experience in educating Deaf children with cognitive language development issues while working at Pressley Ridge School for the Deaf in Pittsburgh, Pa. Yashi hopes to make a significant impact in pediatric audiology by advocating for bilingual early exposure in Deaf children through innovative publications. She also aspires to conduct significant research work with new neuroimaging technology, functional Near Infrared Spectroscopy (fNIRS).

Lab Reports



Erin E. Spurgeon is a first-year student in the Master of Arts in Interpretation program at Gallaudet University. She received a Bachelor of Science in Psychology from the University of Arizona. Her previous laboratory experience includes the Deaf Studies Laboratory with Dr.

Peter Hauser at the Rochester Institute of Technology, and the Laboratory for Language and Cognitive Neuroscience at San Diego State University with Dr. **Karen Emmorey**.

Erin hopes to continue her education within the new Educational Neuroscience PhD program at Gallaudet University. Her research interests include the relationship between social behavior, stress, and higher cognitive abilities in Deaf children.

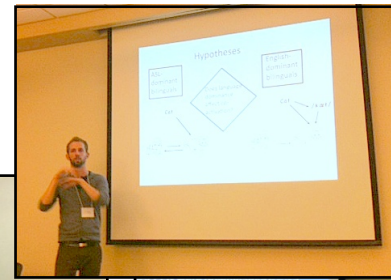
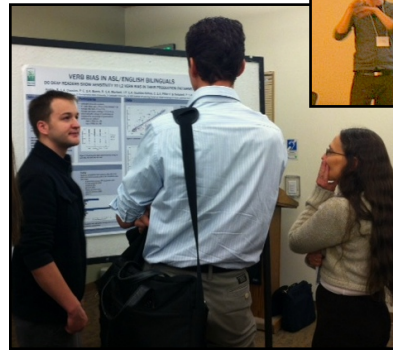
As an intern for Dr. **Pettito** in the BL2 laboratory, she looks forward to learning more about functional Near Infrared Spectroscopy (fNIRS) and using this technology to monitor areas of the brain associated with cognitive processes, such as working memory and language processing.

-Contributed by Clifton Langdon and the BL2 Interns.



Ten current and former members of the VL2 community contributed to the success of the 10th High Desert Linguistics Society (HDLS) Conference in Albuquerque, NM on Nov. 1 - 3, 2012. HDLS is a graduate student organization that hosts a biennial conference focusing on cognitive-functional linguistics, indigenous language revitalization, and signed language linguistics. VL2ers contributed posters, presentations and even a keynote address (Dr. **Paul Dudis**).

One highlight of the conference was two sign language research panels featuring transdisciplinary presentations by six VL2-affiliated researchers.



Undergraduate Research Assistant **Teri Jacquez** commented

on her Facebook account, "It was such an awesome experience to see all the presenters and then to go to the VL2 Party after the conference, and there were five languages happening simultaneously! It really opened my mind." The depth and breadth of the sign language research presented at the conference was impressive, and spanned two full days, including studies of ASL, Canadian ASL, LIBRAS, Argentinian Sign Language, German Sign Language, Irish Sign Language, Sign Language of the Netherlands (NGT), and Catalan Sign Language. HDLS was an excellent opportunity to showcase VL2 findings and open a dialogue with local New Mexico educators, interpreters, and researchers from around the globe.

Photos, from above L to R: VL2 graduate student **Benjamin Anible** explains his research on verb bias sensitivity in deaf ASL-English bilinguals to Dr. **Wolfgang Mann** from City University London, currently on a Marie Curie Post-doctoral Fellowship at University of Texas, Austin, and Professor **Laura Janda** from University of Tromsø, Norway. **Paul Twitchell**, VL2 graduate student in Linguistics at UNM, presents his hypotheses during a panel presentation at HDLS. **Corrine Occhino-Kehoe**, member of the VL2 Student Leadership Team, describes the grammaticization of the ASL sign HAPPEN from a verb to a discourse marker.

-Contributed by the Morford Lab at UNM

For more information on the Brain and Language Lab
<http://petitto.gallaudet.edu>

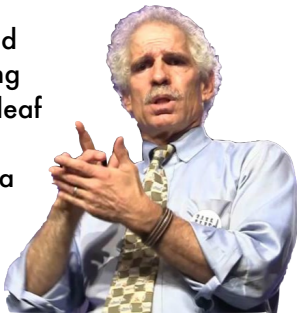
outreach



Nov. 8: Lecture by Dr. Ron Stern

Last week, on Nov. 8, Dr. Ronald Stern presented as part of the VL2 Educational Neuroscience Series.

Dr. Stern discussed the quality of deaf education in the past and the present and drew upon these to discuss the implications of trends for the future. Stern noted that the lack of convergence between planning and action, research and practice, and perception and reality has long plagued the deaf child's prospects for a quality and humane education for the purposes of whole person development.



Although, Stern argued, the original intent of IDEA (Individuals with Disabilities Education Act) is timeless, things have evolved over time to today's increasingly "one size fits all" approach; this has been detrimental for the low incidence population of deaf children.



Via the "Child First" campaign, the Conference of Educators and School Administrators of Programs for the Deaf (CEASD) and the National Association of the Deaf (NAD) are calling for a return to the original principle of the federal law.

In his presentation, Dr. Stern discussed socio-political, bio-ecological and educational themes important for

building critical reform on behalf of today and tomorrow's deaf children.

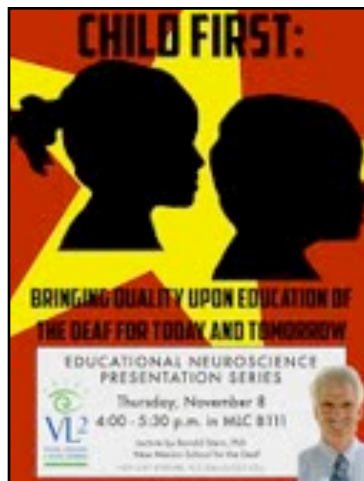
If you missed this or any other VL2 presentation, the videos are archived online and can be found at the following links:

- (2012-2013) <http://webcast.gallaudet.edu>
- (2011-2012) <http://vl2.gallaudet.edu/presentation.php?id=y2011>
- (2010-2011) <http://vl2.gallaudet.edu/presentation.php?id=y2010>
- (2009-2010) <http://vl2.gallaudet.edu/presentation.php?id=y2009>
- (2008-2009) <http://vl2.gallaudet.edu/presentation.php?id=y2008>
- (2007-2008) <http://vl2.gallaudet.edu/presentation.php?id=y2007>

All 2012-2013 lectures will be held from 4-5:30 p.m., in GU's MLC B111. Each is [live-streamed](#).

VL2 Abroad

Karen Emmorey, the leader of VL2's third strategic focus area on reading and literacy in a visual language, recently presented VL2 research in Spain. Her European presentations quickly became European adventures while she was stranded abroad while airports on the east coast of the U.S.



Research Briefs



Eye Gaze and Joint Attention: Fundamental Skills for Successful Interaction in Home and School Environments

Bimodal Bilingual Approaches for Children with C. Implants



The Benefits of Bilingualism: Impacts on Language and Cognitive Development

ASL/English Bilingual Education: Models, Methodologies, and Strategies



FIND THEM AT <http://vl2.gallaudet.edu>

education



worked to recover from Hurricane Sandy's aftermath.

At the Neurobiology of Language Conference, San Sebastian, Spain, Emmorey presented "Mapping the reading circuits for skilled deaf readers: An fMRI study of semantic and phonological word-level processing" (with **Jill Weisberg**, **Stephen McCullough**, and **Jennifer Petrich**).

In addition, Emmorey gave a lecture for the general public, on "The signing brain: What sign languages tell us



about human language and the brain." This was sponsored by the Basque Center for Brain and Language (BCBL), also in San Sebastian. National and local news featured her work.

Emmorey was not the only VL2 researcher to travel abroad recently for presentations of VL2 research. November 5, **Peter Hauser** gave the keynote for the "Children of Possibilities: Learning and Growing in a Changing World"

conference at Örebro University in Sweden. Hauser's talk is a follow up talk to his presentation in Sweden last May, a talk which is now available on [video](#). From there, Hauser travels to other sites in Sweden and Denmark. Details coming in December.



Student Leadership Team (SLT)

It's time to start applying for VL2 student travel and research grants – we have lots of funds this year JUST FOR VL2 STUDENTS. Don't let this opportunity slip through your fingers! All grants will be reviewed by the Student Review Committee, chaired by **Ben Anible** from the University of New Mexico. Check your VL2 Student Documents folder on Google Docs for the application forms –or contact your SFA representative.



Do you know who your SFA representative is? Here's the list. If you're not sure which SFA you're in, ask your PI, and then contact your SFA representative to make sure you're on the VL2 student email list and have access to the super-important VL2 Student Documents folder on Google Docs.

- SFA 1 - Deb Cates - deb.m.cates@gmail.com
- SFA 2 - Corrine Occhino-Kehoe - cmocchino@gmail.com
- SFA 3 - Amy Letteri - amy.letteri@gallaudet.edu
- SFA 4 - Adam Stone - adam.stone@gallaudet.edu
- SFA 5 - Erica Israel - emi5332@rit.edu

TL2 DBITS

VL2 Recipient of NSF Supplemental Grant for Interpreting

The Office of Sponsored Programs at Gallaudet University recently announced that VL2's **Thomas Allen** and **Laura Ann-Petitto** have been awarded a federal grant for "Collaborative Research: Science of Learning Center: Visual Language and Visual Learning (VL2); Supplement for Interpreting" from the National Science Foundation.

VL2 Research Assistant Positions Open in US and Canada

Calling all students interested in research opportunities in the sciences!

VL2 has labs all around the nation and the world, and several are currently searching for research assistants. In addition to the hands-on research experiences available at VL2 research labs, the vital and energetic VL2 student network spans the globe and provides valuable mentoring and professional development opportunities.

What are some of the perks of working with VL2? Current VL2 students and research assistants say that these are the best part of their experience:

- Seeing science from the inside-out.
- Networking with 60 other VL2 students around the world.
- Access to training opportunities with the best of the best in sign language research.
- One-on-one time with leading researchers in the field.
- Excellent professional networking.

- Personalized academic training which helps you become an excellent scientist.
- Access to research and travel grants.

For more details, see the [VL2 website](#) and forward to your friends and colleagues.



More details on these presentations can be found on the [VL2 webpage](#).

"The Science of Bilingualism" and Graduate Orientation at Gallaudet U.

"The Science of Bilingualism" is now a part of all graduate student orientation at Gallaudet University. November 10, BL2 Research Assistant **Clifton Langdon** (left) presented a overview of some of the most common misconceptions related to sign language, language acquisition, and bilingualism. Langdon also provided the

2012 cohort of GU graduate students information about the state of the art science coming out of BL2 & VL2. VL2 Science Advisory Board and Translational Research Advisor **Laurene Simms** of Gallaudet U. (below) also presented as part of the program.



Images courtesy of Wei Wang.

VL2 Publication in *Journal of Deaf Studies and Deaf Education*

Karen Emmorey, Jennifer Petrich, and Tamar Gollan. Bimodal bilingualism and the frequency-lag hypothesis. *Journal of Deaf Studies and Deaf Education* was published Oct. 22 at [JDSDE](#).

More VL2 Research at National and International Conferences

At the 6th annual national American Sign Language Roundtable, VL2's Translational Research Manager, **Melissa Herzig** presented "Innovative Approach in Assessing and Teaching ASL: Using Research-Based Tools and Digital Resources." VL2 Research Assistant **Adam Stone** presented "ASL Literature Reborn: Building an On-Demand Video Library." Additionally, Adam Stone recently presented as part of the Deafness Cognition and Language Research Centre (DCAL) Speakers' Series in London England.

Digital Publishing & Sign Languages Plenary

October 19, VL2's Digital Media Manager, **Melissa Malzkuhn**, gave the plenary session at the Conference of Interpreter Training in Charlotte, NC. Her talk was, "Digital Publishing of Sign Language: Technology, Content, and Strategies." In this presentation, Malzkuhn discussed the digital publishing of sign languages, and the role of such publications in bilingualism, language preservation,

TIDBITS

and the provision of resources in the teaching and use of academic ASL.

Monday Morning VL2 Coffee Chat

We are starting a new feature on our Facebook page: the Monday Morning VL2 Coffee Chat. Every Monday morning during the 2012-2013 academic year, the VL2 outreach team will briefly summarize and link to an article by VL2 researchers. These articles touch on important issues for parents of deaf children, educators, and researchers.

The team will be on standby throughout the day to answer questions you might have about the article and its findings.

Occasionally, we will have guests from VL2's international network of researchers answer questions as well. Stand by for the first Monday Morning VL2 Coffee Chat! Be sure to join in the discussion at VL2's [Facebook page](#).

CAID Call for Papers

The Convention of the American Instructors of the Deaf (CAID) Council is happy to announce a call for Proposals for the National CAID Conference. The conference will take

place in Rochester, NY at the National Technical Institute for the Deaf, June 26-28, 2013. The theme of this conference is "best practices."

More information about the conference can be found [here](#).

Visual Learning and Faculty Development at Gallaudet U.

VL2's outreach team is working closely with Gallaudet's faculty development office. As part of the increased contact between units on campus, VL2's outreach team shares information about VL2 findings and events. The most recent "Teaching and Development



newsletter out of the Faculty Development office included information from **D.J. Bolger's** September VL2 lecture and from an excerpted version of the Odyssey "research to practice" article on visual learning that **Sue Mather** wrote with **Diane Clark** in last spring's edition.

VL2 Research Briefs

VL2 publishes research briefs on a number of topics important to deaf education, ASL-English bilingualism, and the science of learning of visual language and visual learning.

We continue to work with numerous national and regional organizations in disseminating our [research briefs](#), which are also available in Chinese and Spanish.

And now briefs are available on issue <http://issuu.com/vl2newsletter>.

VL2 Emerging Scholars

Gallaudet University's Science of Learning Center, Visual Language and Visual Learning (VL2), has launched "[Emerging Scholars](#)," a new lecturers' pool featuring VL2 alumni and graduate students. These individuals represent the newest generation of our upcoming scholars, and they are eager to present important findings from VL2's research and their own research to parents, teachers, and scholars.

Hanumantha on Deaf Identity and Community



Now a lecturer at the University of Virginia, former VL2 post-doctoral fellow **Shilpa Hanumantha** presented as part of UVA's Deaf Culture/ASL

lecture series. Her discussion was recently featured in [UVA campus news](#).



VISIT
800 Florida Avenue NE
Washington D.C., 20002, USA



FOLLOW
[@NSFVL2](#)



CALL
202.651.5866



WRITE
vl2@gallaudet.edu



LIKE
VL2 Science
of Learning Center



READ
vl2.tumblr.com



FAX
202.448.7513

click on vl2.gallaudet.edu